

Distributed Access to a Hydrological Administrative Spatial Data Infrastructure

M. Á. Latre, R. Béjar, P. R. Muro-Medrano

Department of Computer Science and Systems Engineering
University of Zaragoza
María de Luna 1, Edificio Ada Byron, E-50018, Zaragoza (Spain)
latre@unizar.es, rbejar@unizar.es, prmuro@unizar.es

Abstract. A current tendency in information systems in general and geographic information systems in particular is to built them as open systems, allowing data sharing and comprising geographic data and attributes, metadata, and means to discover, visualize, evaluate, access and update the data. The INSPIRE vision of a European Infrastructure of Spatial Information defends that point of view, and this should be particularly true in the case of public administrations. This paper presents an approach to the construction of a SDI for the Ebro river Hydrographical Confederation (CHE), in charge of physically and administratively managing the hydrographical basin of the Spanish Ebro river, starting from ad hoc applications that meets the internal requirements of the CHE, and concluding with the core of an SDI that integrates the existing applications with OpenGIS standard services, like WMS and WFS, into a system that meets both the internal and external requirements of the CHE.

Introduction

A current tendency with information systems in general and with geographic information systems in particular is to be built as open systems, allowing data sharing, by developing spatial data infrastructures comprising geographic data and attributes, metadata, and means to discover, visualize, evaluate, access and update the data. The INSPIRE vision of a European Infrastructure of Spatial Information defends that point of view: data should be collected once and standard distributed services used to share this spatial information between many users and applications [INSPIRE].

This should be particularly true in the case of public administrations [Brox] [Wilson]. This is the situation of the Ebro River Hydrographical Confederation (CHE), in charge of physically and administratively managing the hydrographical basin of the Ebro River. Water points are one of the areas of interest inside the CHE Hydrological Planning Department (OPH): diverse data about nature, location, exploitation and administrative status for water resources is gathered and combined to take the best profit of the basin resources and allow or deny their exploitation. The workflow process needs large amounts of georeferenced data to allow the staff to take fully informed decisions, and tuned applications that allow the staff to perform their tasks efficiently.

In this context, it would be desirable to provide a way in which any other agents (governmental organizations, stakeholders and general public) implied in the hydrological field would take advantage of the processes and data defined by the CHE [Lichy] and vice versa, in the case of governmental organizations, by sharing them without loss of autonomy

and while keeping the concept of property of the data. This would also provide the information supply mechanisms needed as a base to allow public participation in the management of the river basin, as stood by the Water Framework Directive [European Commission] in the aspects related to public participation. To support this, the information systems used cannot be closed and monolithic, but should be opened to be accessed. This way, the OPH information system can be seen as a set of data access-and-update services provided to the OPH itself, the whole CHE, other public administrations, stakeholders and public in general.

This paper is structured as follows: a description of the Ebro River Hydrographical Confederation is presented, followed by the description of the internal information system in use at the organization. Next section is devoted to explain how the system can be opened to external access by integrating into it several standard and open components, proposing different architectures for the different use-cases and trying to take advantage of the already implemented functionality and the existence of open and standard interfaces to access geographic information. The paper finishes by presenting the final SDI architecture, some conclusions and future work lines.

The Ebro Hydrographical Confederation

The Ebro river Hydrographical Confederation (CHE) is the state organization in charge of physically and administratively managing the hydrographical basin of the Ebro river (Fig. 1), through planning (by elaborating and revising a global catchment hydrological plan), managing (by administering and controlling the different water resources in the catchment area) and investing (by projecting and carrying out the public works that may be entrusted to them).



Fig. 1. Ebro river basin

Water points, that is, water resources like wells, springs, drains or reservoirs, are one of the areas of interest inside the CHE Hydrological Planning Department (OPH), whose administrative work is mainly devoted to analyse and approve water point exploitation by particulars. Workflow process includes the gathering of data relative to the water point, including nature, location, exploitation and administrative status; analysing the collected data, by comparing it with data about other points, the exploitation data given by the stakeholder and the river basin management plan objectives, to finally deliver several reports about the physic characteristics and location of the point and a resolution about its compatibility with the river basin management plan, allowing or denying the exploitation of the point.

This workflow process needs large amounts of data, most of them georeferenced, that must be collected and organized in a structured way. These data includes not only that which is directly involved in the organization workflow and that is CHE's responsibility and property,

Distributed Access to a Hydrological Administrative Spatial Data Infrastructure

which must be collected and maintained; but also those data that are going to be used as a support to daily work. The most relevant set of data (due to its key role in the workflow process and to its volume) belonging to the first group is the water point inventory (IPA), stored in an Oracle 8i spatial database and is used to collect and maintain the 50,000 water points they have inventoried so far [Arqued, Margelí] [Comella] [Béjar] [Latre]. The rest of the information, including data maintained by the CHE, such as water points data, administrative dossier information, superficial and groundwater quality status and hydrogeology and the data obtained from other entities or organizations, like reference geographic data and orthoimages are stored in a central repository called GIS-Ebro [Arqued, Losada], in ArcInfo, shapefiles or raster image formats, although a migration to the Oracle 8i database is planned among the changes needed to adjust the infrastructure to the Water Framework Directive. Metadata of all of this datasets has been created and stored into the database [FGDC] [ISO/TC211], since it will be the base for data discovery and download both within the organization and to external entities.

CHE Infrastructure

OPH Component Architecture

The objective of the CHE internal infrastructure is to provide tuned functionality and applications for a perfectly established and experienced workflow process. Since some licences of commercial software were available [Albert] [Tu] and part of the functionality needed was already identified and, in some cases, implemented in a previous version of the set of applications used to access the inventory [Arqued, Margelí] [Comella] [Béjar], the design of the information system made use of all this, providing a set of applications adjusted to this workflow and maximizing the use of tools the tools are used to work with. Though most of them are not compliant with any standard (since at the moment they were designed, many of the specifications proposed by organizations like ISO [ISO] and OpenGIS [OGC] that are currently available did not exist), they were built following an open philosophy, being provided with interfaces that allow the components and applications interact among them and with others.

As a result, the functionality required to perform the regular workflow activities has been separated into independent components (Fig. 2):

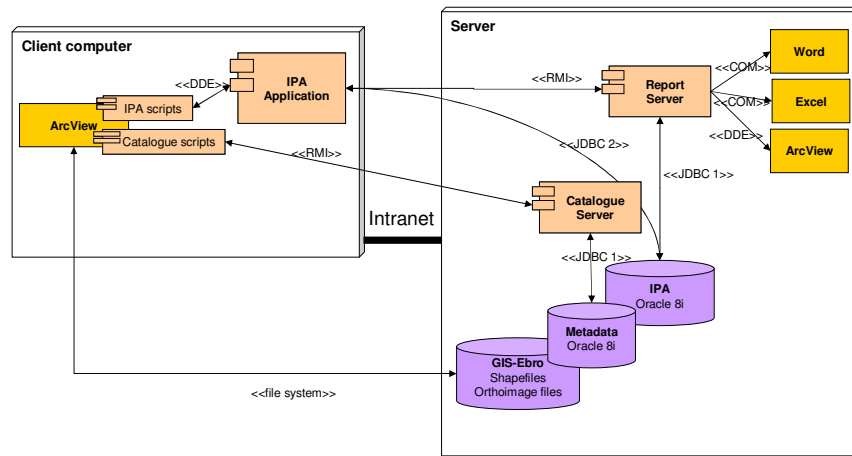


Fig. 2. OPH Component Architecture

- The inventory and administrative management application (IPA application). This Java application is the core of the set of applications used internally in the CHE, allowing managing the information of the repository by consulting, adding, deleting and updating data about water points and stakeholders' dossiers. It enforces the established workflow process and it is the main responsible for co-ordinating the other components services invocation, along with the provision of services that allow the other components to interact with it. Its graphic user interface can be seen in Fig. 3, left.
- ArcView is used as the visualization and editing tool for the geographical information stored in the inventory. It is customized [Albert] [Tu] with some *Avenue* scripts that provide a communication mechanism between ArcView and the IPA application. As a visualization tool, the IPA application acts as a limited, non-standard feature server, providing a subset of points and attributes of the water points in the area that is been visualized. As an editing tool, the scripts notify changes made in the set of points (new-point insertion or point location modification) to the IPA application, by invoking the services it provides. The rest of geographical information that it is used in ArcView is taken directly from the central repository of GIS-Ebro, although, in the case of the orthoimages some scripts are used for convenience to access just the files needed in the visualized area.

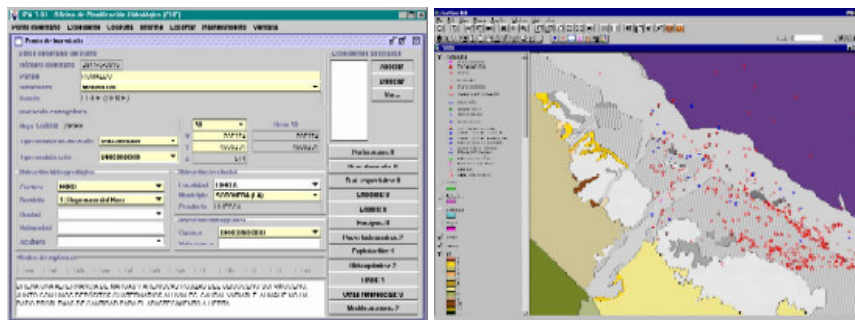


Fig. 3. IPA application (left) and ArcView (right) graphic user interface

Distributed Access to a Hydrological Administrative Spatial Data Infrastructure

- A catalog service with is also available at this level through ArcView [Zarazaga] [Muro-Medrano]. When working with ArcView, users are able to launch a search client of geographic data available inside the organization, and load the selected dataset result of a search in ArcView.
- An independent server created to construct in background the administrative and informative reports requested by the users through the IPA application using the RMI protocol, avoiding increasing the load of the users' computers. The report server, upon request, generates a report file, which will be placed in an accessible directory inside the organization. The client receives the document URL and can open it with its default application viewer.

Reports are divided into different categories depending on the generated file type and the nature of their structure. Word, Excel, ArcView or Acrobat PDF static reports have a predefined structure, and the fields are filled using a query with default parameters. This kind of reports include comprehensive data stored about a single point or a set of them in PDF format, basic data and piezohydrometry series of a set, both in Excel and hydrochemical Piper and Stiff graphics in ArcView. Dynamic reports are based on templates not completely fixed, where the final structure depends on the specific content and it is determined at building time. Word is used in this situation, when an administrative resolution report is needed. These administrative reports combine data coming from one or more water points organized in a certain structure of sections and paragraphs depending on the nature of the point. The structure and content of these sections and paragraphs are stored in the database, so it can be maintained and updated along time.

CHE Component Architecture

IPA data is also used by the rest of the departments of the CHE, which access the inventory and, sometimes, insert new information or update the existing one, as in the case of the Quality Area, whose monitoring stations have been incorporated inside the inventory, making both departments profit of sharing this information.

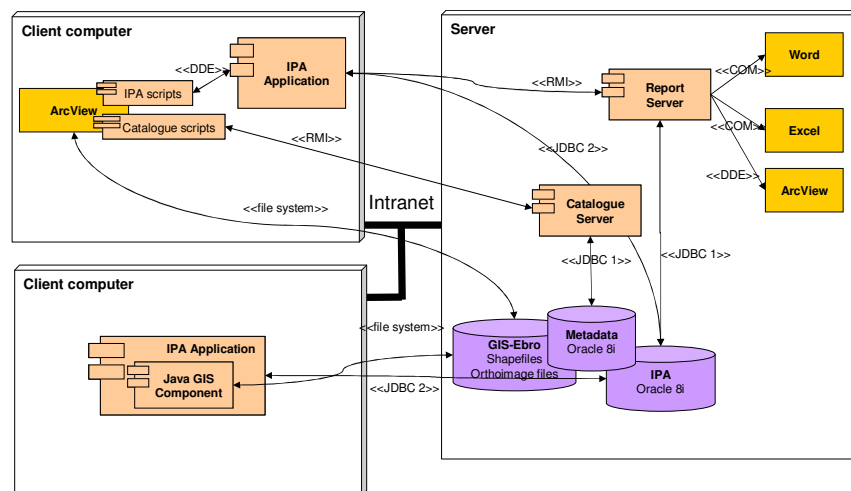


Fig. 4. Different component configurations inside the CHE

Due to the fact that all the departments in the CHE share the same intranet, the same architecture can be used and, therefore, the same functionality can be obtained in other departments, but since the use of the inventory is limited in most cases to query access, and there is no interest in administrative information, a more compact version of the application is provided: a visualization tool is integrated into a Java component inside the client. This way, an external and licensed application is not required to just visualize in a geographical way the information managed by the application. The rest of the information of GIS-Ebro is still available through the intranet, as well the functionality provided by the report and catalogue server (Fig. 4).

Providing access to other agents

As has been explained previously, a way in which any other agent (governmental organizations, stakeholders and general public) implied in the hydrological field would take advantage of the processes and data defined by the CHE should be provided; in the case of other public administrations, by making profit by sharing them without loss of autonomy and while keeping the concept of property of the data; in the case of companies subcontracted to perform fieldwork, by allowing them to insert the data directly; in the case of general public and stakeholders, by providing the information supply mechanisms needed as a base to allow public participation in the management of the river basin, as stood by the Water Framework Directive.

To support this, the infrastructure should be opened to be accessed, if possible, in a standard way [Harrison] [JRC] [Nebert]. The optimization and customization degree may be reduced, but, on the contrary, it will increase interoperability, which will allow more and better information spreading possibilities, like, for instance, by developing client applications by chaining not only services provided by the CHE, but also standard services provided by other entities. In the case of the CHE, this is to be done by integrating some standard services compliant with the OpenGIS specification with the existing ones.

Data supplier organizations

There exist some organizations that have to work intensively adding or updating points, providing read and write access can be really beneficial for both the CHE and the other organizations. On the one hand, this is the situation of companies that have been subcontracted to perform some fieldwork in a certain area or are in charge of collecting the last measurements of a group of monitoring stations. By allowing them to access directly the system and update the inventory, work at the CHE is clearly reduced without increasing significantly the amount of work assigned to the company staff. On the other, the Spanish political system allows that other governmental organizations (local and regional administrations and the Ministry of the Environment) have also authority on other aspects related to water management. To perform they activities, they need the same sort of data (and, when the geographical scope of the administrations overlaps, the exactly the same data) the CHE is collecting and maintaining. These organization can use the CHE inventory as if it were theirs, taking profit not only of the available data but also of the whole infrastructure.

To access and update the information stored in the inventory (Fig. 5), the IPA application has been adapted to provide optimised access to the database through internet, reducing the data

Distributed Access to a Hydrological Administrative Spatial Data Infrastructure

transferred to the minimum. Selected external organizations which have been authorized to update the inventory, have been provided with the application and are able to access and update the information with the same tool at use inside the CHE. Visualization of geographical information can be achieved in this case by three different ways: ArcView, the internal Java GIS component and a Web Map Server client. The first two ways are the same that are provided inside the CHE. They are the most appropriate in the case of inserting new points, but they present the drawback that the geographical datasets must available within the organization is using it, so the geographical data belonging to the CHE must be downloaded first.

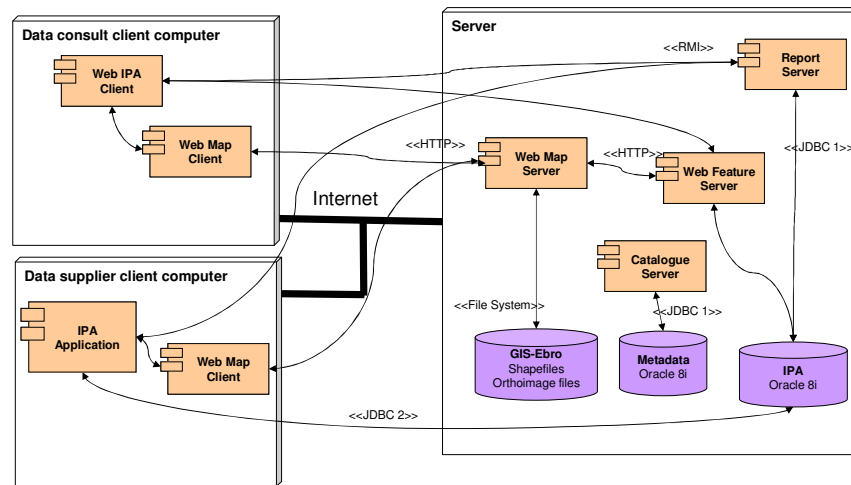


Fig. 5. Other organizations access architectures.

The third alternative can be used regardless of local availability of data and it consists in the use of an html client that accesses an OpenGIS standard Web Map Server (Fig. 6). Given a certain water point, the IPA application can launch the client, which will initially show a map with reference data (administrative divisions, centres of population, orthoimage, road and rail links, orography), hydrological data (rivers, lakes, reservoirs, hydrogeological domains, aquiferous ...), and the water points in the area, with the water point of interest centred in a 1 km² area. The usual tools are provided for the user to interact with the map (zoom in, zoom out, full extent, pan ...) and if the user ask for more information on other water point, it will be opened in the application. The client also allows for insertion of new points, giving the coordinates of the point to the application, in order to complete all the information required to insert the point into the system.

Distributed Access to a Hydrological Administrative Spatial Data Infrastructure

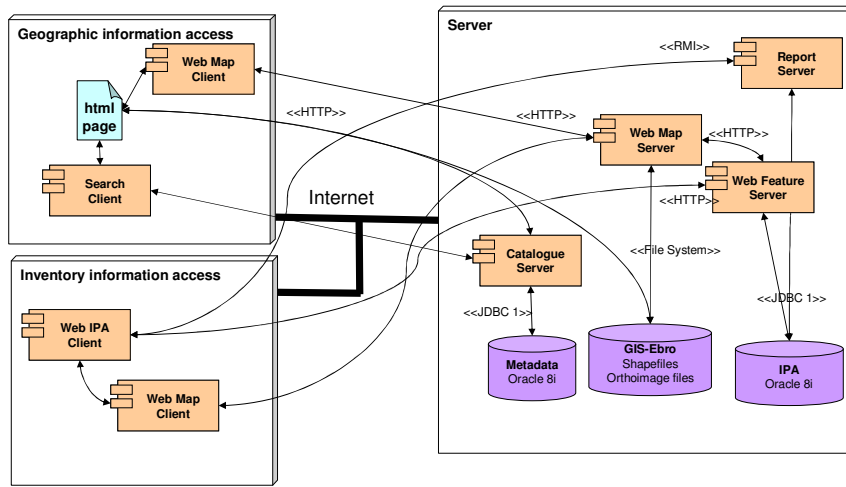


Fig. 7. General public access

Access to the data (Fig. 7) is achieved by a set of static html thematically structured pages held in the CHE's website, that allow the users to browse the dataset metadata, to access the web map server client to visualize it, and, eventually, to download the datasets (Fig. 8). A search tool is also available, so the user can query the same catalogue service that is accessible through ArcView inside the OPH to get dynamically created html page with all the datasets fulfilling the query restrictions imposed. As with the static pages, the user can visualize the data result of a query with the map server client and download it.

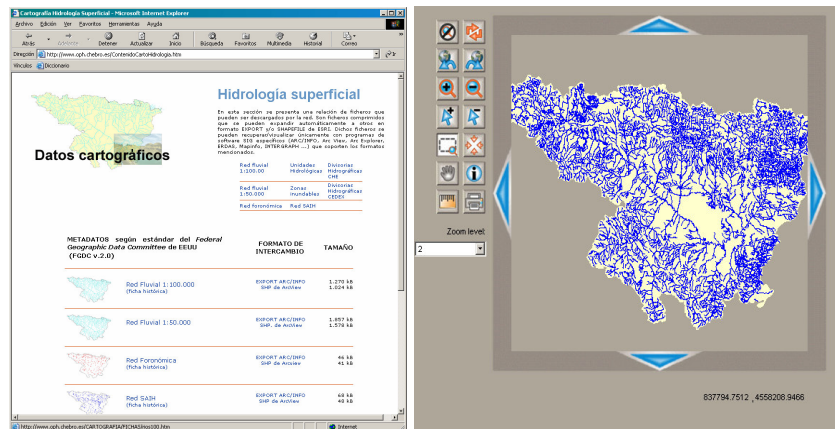


Fig. 8. Dataset browsing and downloading page (left) and dataset visualization (right)

Access to up-to-date inventory information is provided much like query-only public administrations: specific html clients query the web feature server and basic information results are shown. If the user is interested in further information, he or she can request any of the informative report from the report server.

Service architecture

After integrating into the infrastructure the standard services needed to provide access to the CHE data to external agents, a service architecture is finally made available, as it is shown in Fig. 9.

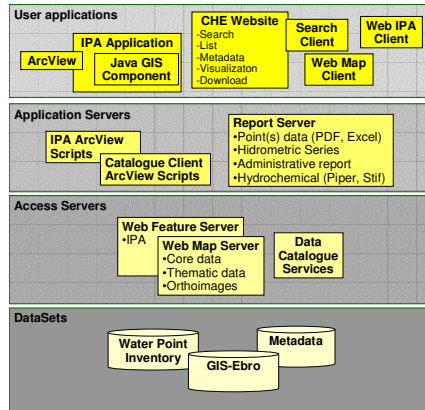


Fig. 9. Hydrological administrative spatial data infrastructure

Geodata and metadata are the base of the infrastructure. It is going to be used mainly in the activities derived from the OPH workflow and is going to be supplied or updated by other organizations by means of the services and applications implemented on top of them. Metadata is included with geodata as an INSPIRE recommendation.

On top of the geodata and metadata, the chainable web services integrated into the infrastructure to offer access to external organizations and particulars. The main purpose of these services is to provide different standard ways of accessing the data, allowing interoperability among them and other standard services provided by other organizations to easily create web applications to satisfy information supply requirements.

User applications and applications servers are built on top of geodata or the chainable standard services, depending on their purpose: applications to be used in the daily work process inside the organization (IPA application, report server and ArcView customisation scripts), that have been highly tailored and tuned to adjust to this process in an efficient way, work directly against the geodata. The user applications designed to provide a more general access to the external agents interested mainly in consulting the data (the CHE website applications: search client, web map client and the IPA web feature client) are built on top of the chainable standard services, but making profit of the available non-standard, though open, servers (as the report server) to provide them with access to the capabilities they offer.

Conclusions and Future Work

The spatial data infrastructure of the Hydrological Planning Department of the Ebro River Hydrological Confederation has been presented in this paper. It has been constructed starting from the set of geodata and metadata used in the daily work procedures and from the applications developed to perform this workflow process, and integrating into them a group

Distributed Access to a Hydrological Administrative Spatial Data Infrastructure

of open, standard services along with web applications that access the previously existing applications and the introduced standard services.

This follows the current tendency with geographic information systems that consists on built open spatial data infrastructures that comprises geographic data and attributes, metadata, and means to discover, visualize, evaluate, access and update the data. Both the INSPIRE vision of a European Infrastructure of Spatial Information and the public participation requirements of the European Water Framework Directive defends that point of view.

The presented spatial data infrastructure allows to fulfil the daily workflow process inside the CHE, while provides ways in which any other external agents (governmental organizations, stakeholders and general public) implied in the hydrological field would take advantage of the processes and data defined by the CHE

This way, the OPH information system can be seen as a set of data access-and-update services provided to the OPH itself, the whole CHE, the other public administrations that work in the hydrological field and general public.

At present, the internal infrastructure and the CHE website (static pages and web map client) is fully operative, while access mechanisms provided to other organizations are going to be installed in a short period. Finally, custom applications offered to individuals have been prototyped but have to be redesigned to meet the Water Framework Directive requirements. Indeed, future lines of work are related with this directive, as the GIS-Ebro infrastructure has to be adapted and improved, by using new hydrological models, including new data about superficial and groundwater bodies, and being migrated into the Oracle 8i database. The IPA application has also to be incrementally redesigned to make use of the standard chainable services available, which will reduce the complexity of the infrastructure and the maintenance efforts.

References

- Albert, C., Brownsword, L., *Meeting the challenges of commercial-off-the shelf (COTS) products: the information technology solutions evolution process (ITSEP)*, Proceedings of the First International Conference on COTS-Based Software Systems (ICCBSS 2002). LNCS 2255, Springer-Verlag, Heidelberg, Germany, 2002.
- Brox, C., Bishr, Y., Senkler, K., Zens, K., Kuhn, W., *Toward a geospatial data infrastructure for Northrhine-Westphalia*, Computers, Environment and Urban Systems, vol. 26, 19-37, 2002.
- Comella, S., López, R., Béjar R., Zarazaga, J., Muro-Medrano, P.R., "Making profit of software interoperability in a web enabled water point inventory distributed system." *Telegeo '99, First international workshop on telegeoprocessing*, 1999.
- European Commission, Guidance on Public Participation in Relation to the WFD, http://forum.europa.eu.int/Public/irc/env/wfd/library?l=/framework_directive/guidance_documents/participation_guidance&vm=detailed&sb=Title, 2002.
- European Commission, The EU Water Framework Directive - integrated river basin management for Europe, http://europa.eu.int/comm/environment/water/water-framework/index_en.html
- European Commission, Vogt, J. (chairman), *Guidance Document of Implementing the GIS Elements of the Water Framework Directive*, European Communities

M.Á. Latre, R. Béjar, P.R. Muro-Medrano

http://forum.europa.eu.int/Public/irc/env/wfd/library?l=/framework_directive/guidance_documents/guidance_outcome&vm=detailed&sb=Title, 2002.

FGDC, Metadata Ad Hoc Working Group. *Document FGDC-STD-001-1998, Content Standard for Digital Geospatial Metadata*. Federal Geographic Data Committee (USA) 1998.

GSDI. Global Spatial Data Infrastructure homepage. <http://www.gsdi.org>

Harrison, J., “OGC Web Services. Geoprocessing and the New Web Computing Paradigm”. *GeoInformatics*, October/November 2002, 18-21, October/November 2002.

INSPIRE: The Infrastructure for Spatial Information in Europe (INSPIRE) initiative homepage, <http://www.ec-gis.org/inspire>

ISO. ISO/TC 211 (2001): Draft International Standard ISO/DIS 19115, Geographic information — Metadata, <http://www.isotc211.org/>.

ISO: ISO homepage, <http://www.iso.org>.

JRC-Institute for Environment and Sustainability, Ispra (publisher), “INSPIRE Architecture and Standards Position Paper”, http://inspire.jrc.it/reports/position_papers/inspire_ast_pp_v4_2_en.pdf, 2002.

Muro-Medrano, P.R., Nogueras, J., Torres, M.P., Zarazaga, F.J., “Web catalog services of geographic information, an OpenGIS based approach in benefit of Interoperability”, *Proceedings of the 6th AGILE Conference on Geographic Information Science*, Presses Polytechniques et universitaires Romandes, 169-177, 2003.

Nerbert, D.D., *Developing Spatial Data Infrastructures: The SDI Cookbook*, <http://www.gsdi.org/pubs/cookbook/>, 2003.

OGC, OpenGIS Consortium homepage, <http://www.opengis.org>

Tu, S., Xu, L., Abdelguerfi, M., Ratcliff, J., “Achieving Interoperability for integration of Heterogeneous COTS Geographic Information Systems”, *ACM-GIS'02*, November 8-9, 162-167, 2002.

Zarazaga, F.J., López, R., Nogueras, J., Cantán, O., Álvarez, P., Muro-Medrano, P.R., “First Steps to Set Up Java Components for the OpenGIS Catalog Services and its Software Infrastructure”, *Proceedings of the 3rd AGILE Conference on Geographic Information Science*, 2000.

Arqued Esquía, V.M., Margelí Aguilar, M., Pardo Blanco, F. Bescós Roy, B. García Vera, M., “La base de datos IPA. Un inventario de puntos de agua de la cuenca del Ebro”, *Conferencia de ESRI*, 1995.

Arqued Esquía, V.M., Losada García, J.A. “El GIS-Ebro. Un sistema de Información Geográfica para la cuenca del Ebro”, *Conferencia de ESRI*, 1995

Béjar, R., Fernández, P., Latre, M.Á., Muro-Medrano, P.R., Rioja, R., Zarazaga, J., “Interoperation of distributed GIS components in a Hydrological Data Inventory System”. *4th AGILE Conference: GI in Europe: Integrative – Interoperable – Interactive*, 2001.

Wilson, J.P., Mitsova, H., Wright, D.J., “Water Resource Applications of Geographic Information Systems”. *Urisa Journal*, 61-79, 2000.

Lichy, C., “An object-oriented river information system (RIS) for WWW-access to distributed environmental data”. *Advances in Environmental Research*. 377-344, 2001.

Latre, M.Á., Fernández, P., Cantán, Ó., Garcés, C., Rioja, R., Molinero, J., “Interoperabilidad de componentes SIG en un Sistema de Información Hidrológico” *JSIG 2001*, 2001.

Distributed Access to a Hydrological Administrative Spatial Data Infrastructure